



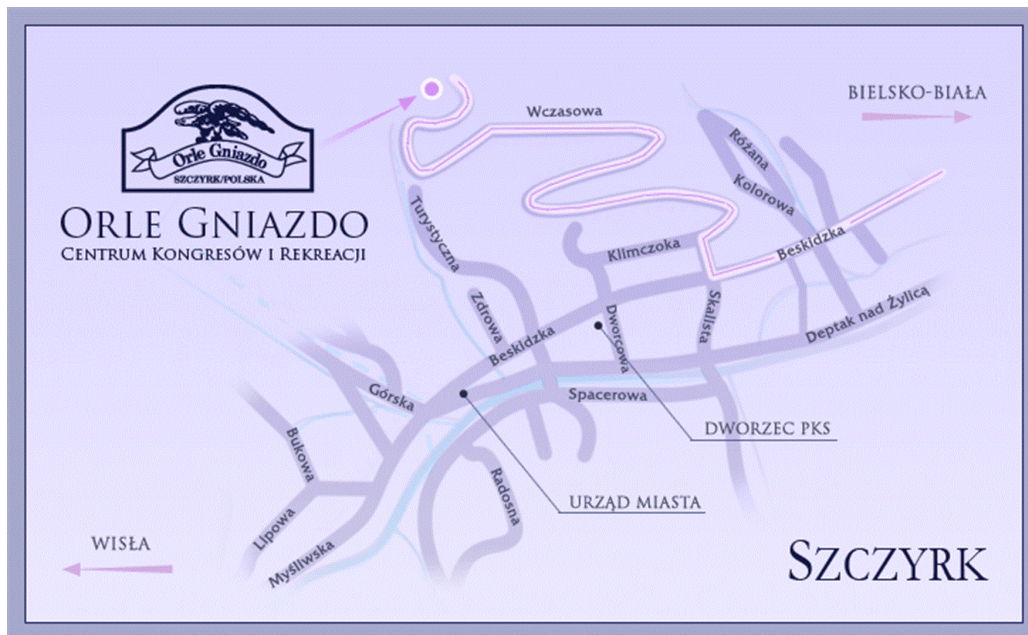
Branch Chief
Sensei Robert Wyciszkievicz
u1l. Wschodnia 5 m 55
26-500 Szydłowiec, POLAND
GSM: +48 660 631 863
Email: wycior70@wp.pl
URL: www.mushinhonbu-dojo.pl

I.K.O. MATSUSHIMA „MUSHIN” HONBU DOJO POLAND

IKO MATSUSHIMA'S OFFICIAL
2012 EUROPEAN KYOKUSHIN KARATE SUMMER TRAINING CAMP
GENERAL INFORMATION

DATE: 30 July - 4 August 2012

LOCATION: Congress and Recreation Center “Eagles Nest”, in the area of Szczyrk – POLAND Internet page: www.orne-gniazdo.pl



Don't miss this unique opportunity to train in beautiful surroundings under top instruction



Kyokushin Karate Shihans brought in from 5 countries



Branch Chief
Sensei Robert Wyciszkievicz
u1l. Wschodnia 5 m 55
26-500 Szydłowiec, POLAND
GSM: +48 660 631 863
Email: wycior70@wp.pl
URL: www.mushinhonbu-dojo.pl

I.K.O. MATSUSHIMA „MUSHIN” HONBU DOJO POLAND

INVITED INSTRUCTORS:

Shihan Roman Szyrayev - Canada



Shihan Klaus Rex - Denmark



Shihan Gabriel Barluenga - Spain



Shihan Roman Kucfir - UK



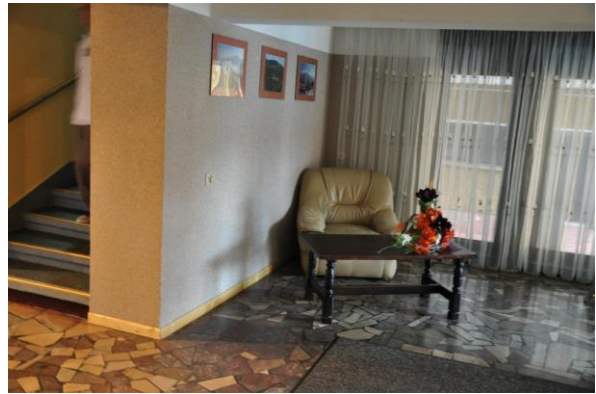


Branch Chief
Sensei Robert Wyciszkievicz
u1l. Wschodnia 5 m 55
26-500 Szydłowiec, POLAND
GSM: +48 660 631 863
Email: wycior70@wp.pl
URL: www.mushinhonbu-dojo.pl

I.K.O. MATSUSHIMA „MUSHIN” HONBU DOJO POLAND

The Camp venue:

Congress and Recreation Center "Eagles Nest"



Hall



Cafeteria



Dining room



Branch Chief
Sensei Robert Wyciszekiewicz
u1l. Wschodnia 5 m 55
26-500 Szydłowiec, POLAND
GSM: +48 660 631 863
Email: wycior70@wp.pl
URL: www.mushinhonbu-dojo.pl

I.K.O. MATSUSHIMA „MUSHIN” HONBU DOJO POLAND

Jacuzzi is available for 35 polish zloty for 5 people (7 €) per hour and Sauna for 5 people
5.25 polish zloty per hour (about 1 euro)



Jacuzzi



Training hall



Branch Chief
 Sensei Robert Wyciszekiewicz
 ul. Wschodnia 5 m 55
 26-500 Szydłowiec, POLAND
 GSM: +48 660 631 863
 Email: wycior70@wp.pl
 URL: www.mushinhonbu-dojo.pl

I.K.O. MATSUSHIMA „MUSHIN” HONBU DOJO POLAND

PRICE: Cost for one participant including full board, accommodation



220 €: rooms: 1,2 persons /higher standard



190 €: rooms: 1,2,3,4 beds /lower standard/ (only 70 places available)

For attendants that do not take part in the camp the price is 170 €.

Children of 4years of age and below are free of charge.

TERMS OF PAYMENT:

50€ deposit only from each participant to be transferred to below account until **31.05.2012**

PKO BP SA
Oddział I w Szydłowcu
ul. Kościuszki 204
26-500 Szydłowiec
SWIFT: BPKOPLPW

ACCOUNT NUMBER: 52 1020 4317 0000 5102 0264 9721

In case of resignation from the camp after this date the deposit will not refund.

Remaining balance can be paid on to above bank account or in person after arriving at the camp site.

Deadline for sending application form: 31.05.2012 for rooms with 2 beds
And the deadline for low price rooms with 4 beds is on the 15th of april



Branch Chief
Sensei Robert Wyciszekiewicz
u1l. Wschodnia 5 m 55
26-500 Szydłowiec, POLAND
GSM: +48 660 631 863
Email: wycior70@wp.pl
URL: www.mushinhonbu-dojo.pl

I.K.O. MATSUSHIMA „MUSHIN” HONBU DOJO POLAND

Branch Chiefs/instructors arriving with a group of 20 or more participants will attend the camp free of charge.

Every participant of the camp should have insurance.

The Polish Organisation will provide free transport for all participants from Krakow and Katowice Airport to the camp site. For Application forms, official invitations, help with visa and if you have any other question, e-mail to: wycior70@wp.pl

CAMP DIRECTOR:

Sensei Robert Wyciszekiewicz



Branch Chief IKO Matsushima Poland and owner of Mushin Dojo



See you in Poland